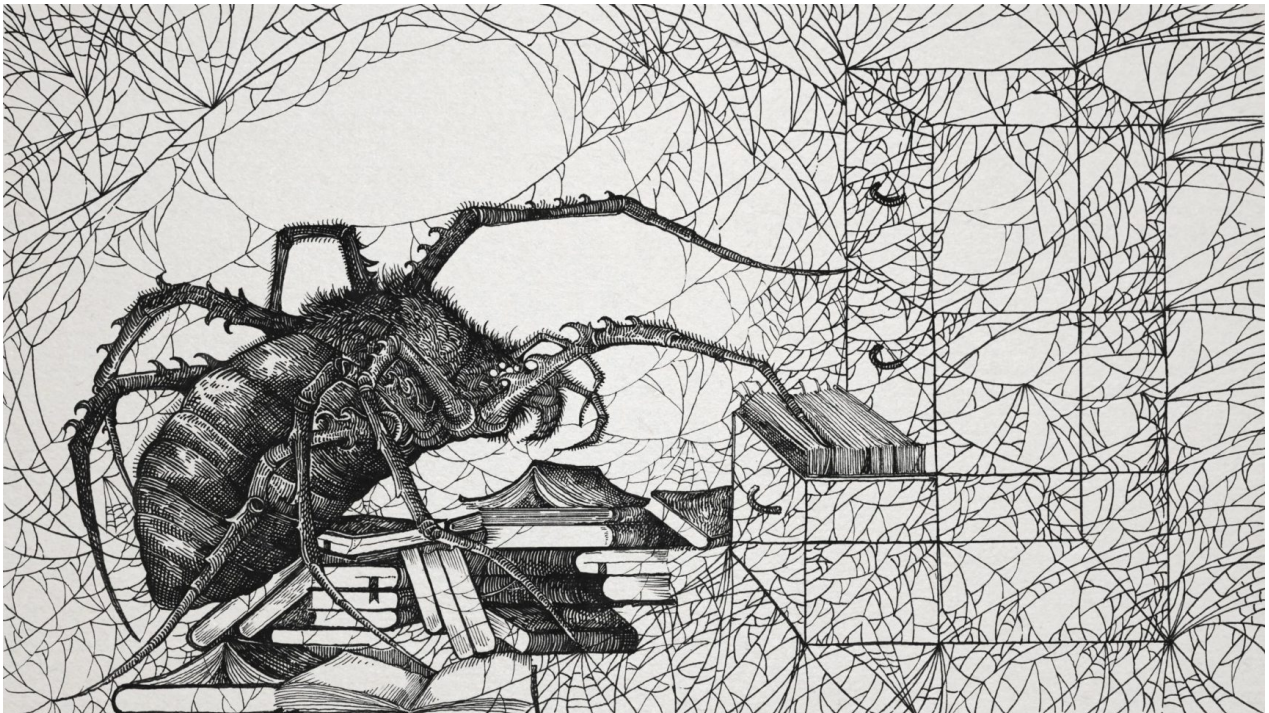




## The Thoughts of a Spiderweb

Spiders appear to offload cognitive tasks to their webs, making them one of a number of species with a mind that isn't fully confined within the head.

*By Joshua Sokol*



[Sin Eater](#) for Quanta Magazine

Millions of years ago, a few spiders abandoned the kind of round webs that the word “spiderweb” calls to mind and started to focus on a new strategy. Before, they would wait for prey to become ensnared in their webs and then walk out to retrieve it. Then they began building horizontal nets to use as a fishing platform. Now their modern descendants, the cobweb spiders, dangle sticky threads below, wait until insects walk by and get snagged, and reel their unlucky victims in.

In 2008, the researcher [Hilton Japyassú prompted](#) 12 species of orb spiders collected from all over Brazil to go through this transition again. He waited until the spiders wove an ordinary web. Then he snipped its threads so that the silk drooped to where crickets wandered below. When a cricket got

hooked, not all the orb spiders could fully pull it up, as a cobweb spider does. But some could, and all at least began to reel it in with their two front legs.

Their ability to recapitulate the ancient spiders' innovation got Japyassú, a biologist at the Federal University of Bahia in Brazil, thinking. When the spider was confronted with a problem to solve that it might not have seen before, how did it figure out what to do? "Where is this information?" he said. "Where is it? Is it in her head, or does this information emerge during the interaction with the altered web?"

In February, Japyassú and [Kevin Laland](#), an evolutionary biologist at the University of Saint Andrews, proposed a bold answer to the question. They argued in a [review paper](#), published in the journal *Animal Cognition*, that a spider's web is at least an adjustable part of its sensory apparatus, and at most an extension of the spider's cognitive system.

This would make the web a model example of extended cognition, an idea first [proposed](#) by the philosophers Andy Clark and David Chalmers in 1998 to apply to human thought. In accounts of extended cognition, processes like checking a grocery list or rearranging Scrabble tiles in a tray are close enough to memory-retrieval or problem-solving tasks that happen entirely inside the brain that proponents argue they are actually part of a single, larger, "extended" mind.

Among philosophers of mind, that idea has racked up citations, including supporters and critics. And by its very design, Japyassú's paper, which aims to export extended cognition as a testable idea to the field of animal behavior, is already stirring up antibodies among scientists. "I got the impression that it was being very careful to check all the boxes for hot topics and controversial topics in animal cognition," said [Alex Jordan](#), a collective behavioral scientist at the Max Planck Institute in Konstanz, Germany (who nonetheless supports the idea).

While many disagree with the paper's interpretations, the study shouldn't be confused for a piece of philosophy. Japyassú and Laland propose ways to test their ideas in concrete experiments that involve manipulating the spider's web — tests that other researchers are excited about. "We can break that machine; we can snap strands; we can reduce the way that animal is able to perceive the system around it," Jordan said. "And that generates some very direct and testable hypotheses."

## The Mindful Tentacle

The suggestion that some of a spider's "thoughts" happen in its web fits into a small but growing trend in discussions of animal cognition. Many animals interact with the world in certain complicated ways that don't rely on their brains. In some cases, they don't even use neurons. "We have this romantic notion that big brains are good, but most animals don't work this way," said [Ken Cheng](#), who studies animal behavior and information processing at Macquarie University in Australia.

Parallel to the extended cognition that Japyassú sees in spiders, researchers have been gathering examples from elsewhere in the animal kingdom that seem to show a related concept, called embodied cognition: where cognitive tasks sprawl outside of the brain and into the body.

Perhaps the prime example is another eight-legged invertebrate. Octopuses are famously smart, but their central brain is only a small part of their nervous systems. Two-thirds of the roughly 500 million neurons in an octopus are found in its arms. That led [Binyamin Hochner](#) of the Hebrew University of Jerusalem to [consider](#) whether octopuses use embodied cognition to pass a piece of food held in their arms straight to their mouths.

For the octopus, with thousands of suckers studding symmetric arms, each of which can bend at any point, building a central mental representation of how to move seems like a computational nightmare. But experiments show that the octopus doesn't do that. "The brain doesn't have to know how to move this floppy arm," Cheng said. Rather, the arm knows how to move the arm.



[cocoparisienne/Pixabay](#)

Octopus movements are too complex to be centrally coordinated.

Readings of electric signals show that when a sucker finds a piece of food, it sends a wave of muscle activation inward up the arm. At the same time, the base of the arm sends another wave of clenched muscles outward, down the arm. Where the two signals meet each other, the arm makes an elbow — a joint in exactly the right place to reach the mouth.

Yet another related strategy, this one perhaps much more common and less controversial, is that the sensory systems of many animals are tuned in to the parts of the world that are relevant to their lives. Bees, for example, use ultraviolet vision to find flowers that have also evolved ultraviolet markings. That avoids the need to take in lots of data and parse it later. "If you do not have those receptors, that part of the world simply doesn't exist," said [William Wcislo](#), a behaviorist at the Smithsonian Tropical Research Institute in Panama.

And then there are animals that appear to offload part of their mental apparatus to structures outside of the neural system entirely. Female crickets, for example, orient themselves toward the calls of the loudest males. They pick up the sound using ears on each of the knees of their two front legs. These ears are connected to one another through a tracheal tube. Sound waves come in to both

ears and then pass through the tube before interfering with one another in each ear. The system is set up so that the ear closest to the source of the sound will vibrate most strongly.

In crickets, the information processing — the job of finding and identifying the direction that the loudest sound is coming from — appears to take place in the physical structures of the ears and tracheal tube, not inside the brain. Once these structures have finished processing the information, it gets passed to the neural system, which tells the legs to turn the cricket in the right direction.

## The Brain Constraint

Extended cognition may partly be an evolutionary response to an outsized challenge. According to a rule first observed by the Swiss naturalist Albrecht von Haller in 1762, smaller creatures almost always devote a larger portion of their body weight to their brains, which require more calories to fuel than other types of tissue.

Haller's rule holds across the animal kingdom. It works for mammals from whales and elephants down to mice; for salamanders; and across the many species of ants, bees and nematodes. And in this latter range, as brains demand more and more resources from the tiny creatures that host them, scientists like Wcislo and his colleague [William Eberhard](#), also at the Smithsonian, think new evolutionary tricks should arise.

In 2007, Eberhard [compared](#) data on the webs built by infant and adult spiders of the same species. The newborns, roughly a thousand times smaller than the adults in some cases, should be under much more pressure from Haller's rule. As a result, they might be expected to slip up while performing a complex task. Perhaps the spiderlings would make more mistakes in attaching threads at the correct angles to build a geometrically precise web, among other measures. But their webs seemed "as precise as that of their larger relatives," Eberhard said. "One of the questions is: How do they get away with that?"

Japyassú's work offers a possible solution. Just as octopi appear to outsource information-processing tasks to their tentacles, or crickets to their tracheal tubes, perhaps spiders outsource information processing to objects outside of their bodies — their webs.

To test whether this is truly happening, Japyassú uses a framework suggested by the cognitive scientist [David Kaplan](#). If spider and web are working together as a larger cognitive system, the two should be able to affect each other. Changes in the spider's cognitive state will alter the web, and changes in the web will likewise ripple into the spider's cognitive state.

Consider a spider at the center of its web, waiting. Many web-builders are near blind, and they interact with the world almost solely through vibrations. Sitting at the hub of their webs, spiders can pull on radial threads that lead to various outer sections, thereby adjusting how sensitive they are to prey that land in those particular areas.

As is true for a tin can telephone, a tighter string is better at passing along vibrations. Tensed regions, then, may show where the spider is paying attention. When insects land in tensed areas of the webs of the orb spider *Cyclosa octotuberculata*, a [2010 study found](#), the spider is more likely to notice and capture them. And when the experimenters in the same study tightened the threads artificially, it seemed to put the spiders on high alert — they rushed toward prey more quickly.

The same sort of effect works in the opposite direction, too. Let the orb spider *Octonoba sybotides* go hungry, changing its internal state, and it will [tighten its radial threads](#) so it can tune in to even small prey hitting the web. "She tenses the threads of the web so that she can filter information that

is coming to her brain,” Japyassú said. “This is almost the same thing as if she was filtering things in her own brain.”



[OpenCage](#)

An orb spider waits on a column made of the gutted corpses of long-ago prey.

Another example of this sort of interplay between web and spider comes from the web-building process itself. According to decades of research from scientists like Eberhard, a spiderweb is easier to build than it looks. What seems like a baroque process involving thousands of steps actually requires only a short list of rules of thumb that spiders follow at each junction. But these rules can be hacked from inside or out.

When experimenters start cutting out pieces of a web as it’s being built, a spider makes different choices — as if the already-built portions of silk are reminders, chunks of external memory it needs to retrieve so it can keep things evenly spaced, Japyassú said. Similarly, what happens in a web once it is built can change what kind of web the spider builds next time. If one section of the web catches more prey, the spider may enlarge that part in the future.

And from the opposite direction, the state of a spider’s nervous system can famously affect its webs. Going back to the 1940s, researchers have [exposed](#) spiders to caffeine, amphetamines, LSD and other drugs, attracting plenty of media attention along the way. Unsurprisingly, these spiders make addled, irregular webs.

Even skeptics of the extended cognition idea agree that this back and forth between the web and spider is ripe ground for more investigation and debate on how to interpret what the spiders are doing to solve problems. “It introduces a biological setup to the philosophers,” said Fritz Vollrath, an arachnologist at the University of Oxford. “For that, I think it’s very valuable. We can start a discussion now.”

But many biologists doubt that this interplay adds up to a bigger cognitive system. The key issue for critics is a semantic — but crucial — distinction. Japyassú’s paper defines cognition in terms of acquiring, manipulating and storing information. That’s a set of criteria that a web can easily meet. But to many, that seems like a low bar. “I think we’re fundamentally losing a distinction between information and knowledge,” Wcislo said. Opponents argue that cognition involves not just passing along information, but also interpreting it into some sort of abstract, meaningful representation of the world, which the web — or a tray of Scrabble tiles — can’t quite manage by itself.

Further, Japyassú’s definition of cognition may even undersell the level of thought that spiders are capable of, say the spider behaviorists [Fiona Cross](#) and [Robert Jackson](#), both of the University of Canterbury in New Zealand. Cross and Jackson study jumping spiders, which don’t have their own webs but will sometimes vibrate an existing web, luring another spider out to attack. Their work suggests that jumping spiders do appear to hold on to mental representations when it comes to planning routes and hunting specific prey. The spiders even seem to differentiate among “one,” “two” and “many” when confronted with a quantity of prey items that conflicts with the number they initially saw, according to a [paper](#) released in April.

“How an animal with such a small nervous system can do all this should keep us awake at night,” Cross and Jackson write in an email. “Instead of marveling at this remarkable use of representation, it seems that Japyassú and Laland are looking for an explanation that removes representation from the equation — in other words, it appears they may actually be removing cognition.”

## Evolution in the World

Even leaving aside the problem of what cognition actually is, proving the simple version of the argument — that spiders outsource problem solving to their webs as an end run around Haller’s rule — is by itself an empirical challenge. You would need to show that the analytical power of the web saves calories a spider would have otherwise spent on the nervous tissue in a bigger brain, Eberhard said. That would require quantifying how much energy it takes to build and use a web compared with the cost of performing the same operations with brain tissue. Such a study “would be an interesting kind of data to collect,” Eberhard said.

Whether this kind of engineered information-processing happens elsewhere in nature is likewise unclear. Laland is a high-profile advocate for the idea of [niche construction](#), a term from evolutionary theory that encompasses burrows, beaver dams and nests of birds and termites.

Proponents argue that when animals build these artificial structures, natural selection starts to modify the structure and the animal in a reciprocal loop. For example: A beaver builds a dam, which changes the environment. The changes in the environment in turn affect which animals survive. And then the surviving animals further change the environment. Under this rubric, Japyassú thinks, this back-and-forth action makes all niche constructors at least candidates to outsource some of their problem solving to the structures they build, and thus possible practitioners of extended cognition.

Alternatively, more traditional theorists label these structures and spiderwebs alike as extended phenotypes, a term proposed by Richard Dawkins. Extended phenotypes are information from an animal’s genes that they express in the world. For example, bird nests are objects that are somehow

encoded in the avian genome. And as with niche construction, natural selection affects the structure — different kinds of birds have evolved to build different kinds of nests, after all. But in the extended phenotype perspective, that selection ultimately just works inward, to tweak the controlling information in the animal's genome.

It's a subtle difference. But experts who subscribe to Dawkins's extended phenotype idea, like Vollrath at Oxford, believe that webs are more like tools the spider uses. "The web is actually a computer, as it were," he said. "It processes information and simplifies it." In this view, webs evolved over time like an extension of the spider's body and sensory system — not so much its mind. Vollrath's lab will soon embark on a project to test just how webs help the spiders solve problems from the extended phenotype perspective, he said.

While Japyassú, Cheng and others continue to look for extensions of cognition outward into the world, critics say the only really strong case is the one with the most metaphysical baggage: us. "It is conceivable for cognition to be a property of a system with integrated nonbiological components," Cross and Jackson write. "That seems to be where *Homo sapiens* is headed."

*This article was reprinted on [TheAtlantic.com](http://TheAtlantic.com).*